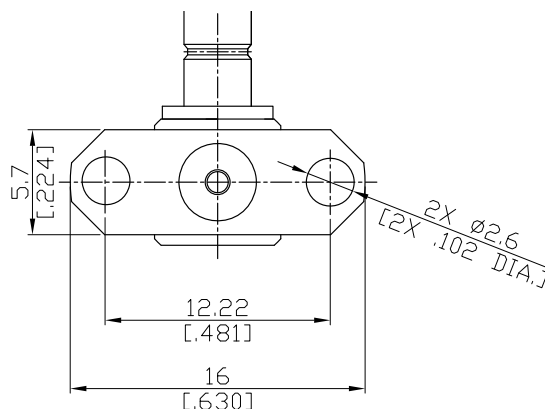
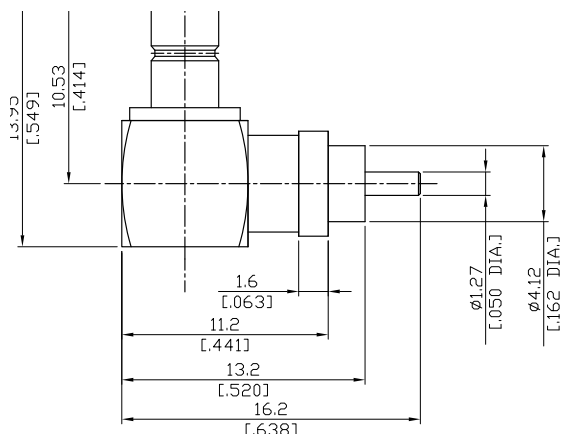


SMB Right Angle Jack (Female) Connector Solder Attachment 2 Hole Flange Mount  
Solder Cup Terminal, 12.22mm (.481 inch) Hole Spacing DC-4GHz VSWR1.29

# SMB2GTA59-1395A / 13



All dimensions are in mm [inch]

Tolerances according to DIN ISO 2768-mH

## Interface

According to

IEC 60169-10; MIL-STD-348B/311

## Electrical Data

Impedance	50 Ω
Frequency	DC to 4 GHz
VSWR (Return Loss)	≤ 1.29 (≥ 18 dB)
Insertion Loss	≤ 0.1 √F (GHz) dB, DC to 4 GHz
Insulation Resistance	≥ 1.×10 <sup>3</sup> mΩ
Center Contact Resistance	≤ 1.5 mΩ
Outer Contact Resistance	≤ 2.5 mΩ
Working Voltage (at sea level)	≤ 250 V rms, 50 Hz, at sea level
Test voltage	750 V rms, 50 Hz, at sea level
Contact current	1.5 A DC typ.

## Material And Plating

Piece Parts	Material	Plating
Centre contact	Brass	Gold plating, 3 μinch (Non-magnetic nickel-phosphorus underplating, 80 μinch)
Body	Brass	Nickel
Insulator	PTFE	

SMB Right Angle Jack (Female) Connector Solder Attachment 2 Hole Flange Mount  
Solder Cup Terminal, 12.22mm (.481 inch) Hole Spacing DC-4GHz VSWR1.29

## SMB2GTA59-1395A / 13

### Mechanical Data

Coupling mechanisms	Screw-lock
Mating Cycles	≥ 500
Centre Contact	Soldered
Terminal Type	Solder Cup
Captivated Type	Mechanical
Disengagement force	8 N min. to 63 N max.
Engagement force	≥ 63 N
Center contact captivation: axial	≥ 10 N

### Environmental Data

Temperature Range	-55°C to +155°C
Thermal shock	MIL-STD-202, Meth. 107, Cond. B
Corrosion	MIL-STD-202, Meth. 101, Cond. B
Vibration	MIL-STD-202, Meth. 204, Cond. B
Moisture Resistance	MIL-STD-202, Meth. 106
RoHS	compliant

### Packing

Single or 100